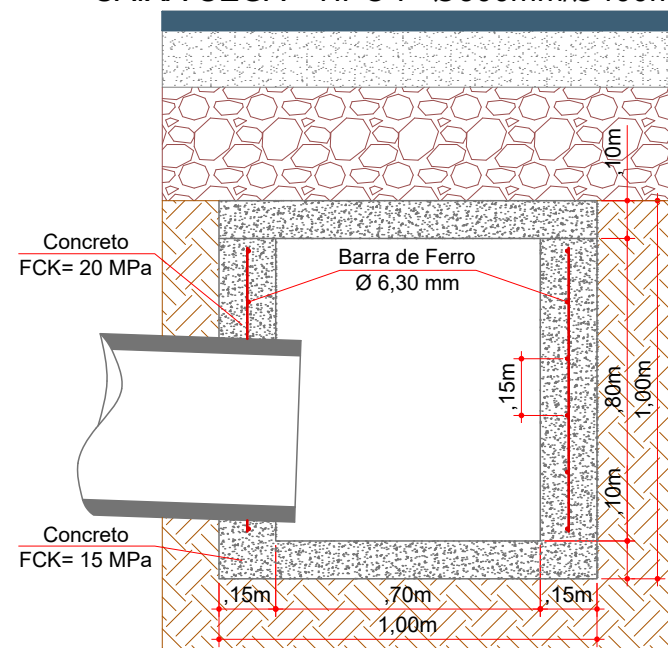
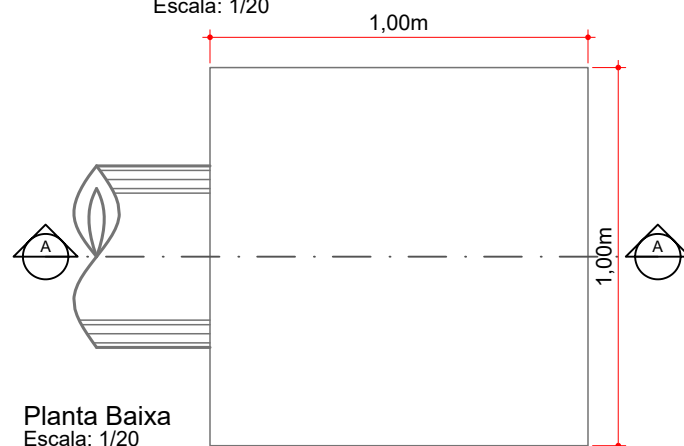


Seção de Reaterro de Vala (Ø300mm/Ø400mm)  
Escala: 1/15

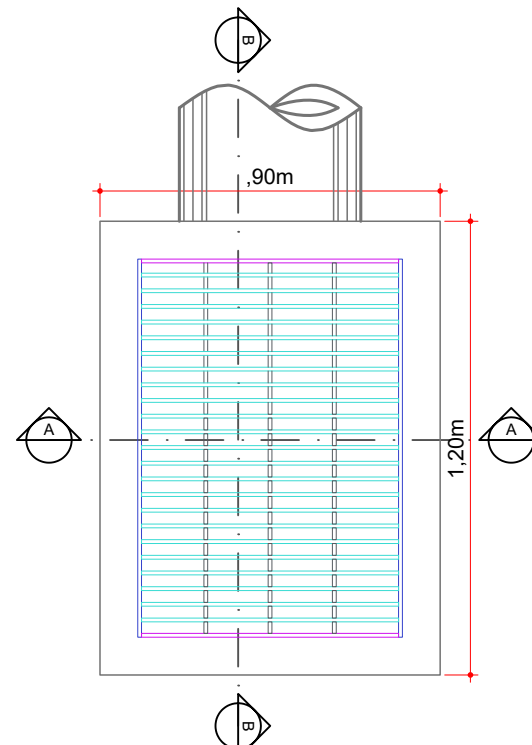
#### CAIXA CEGA - TIPO I - Ø300mm/Ø400mm



Corte AA  
Escala: 1/20

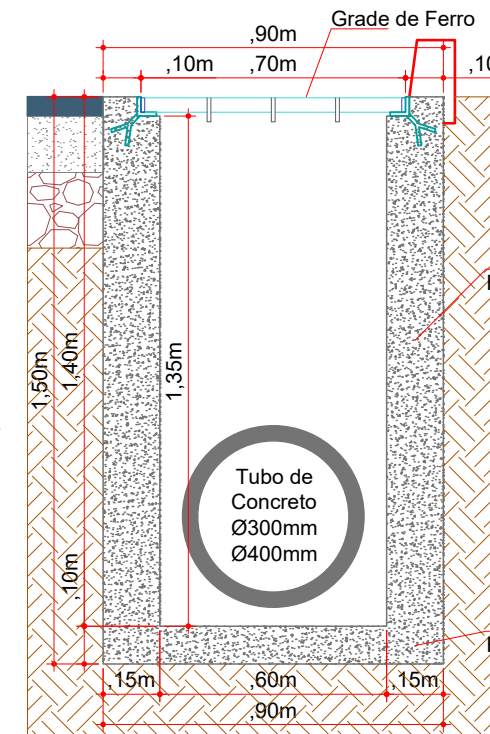


Planta Baixa  
Escala: 1/20

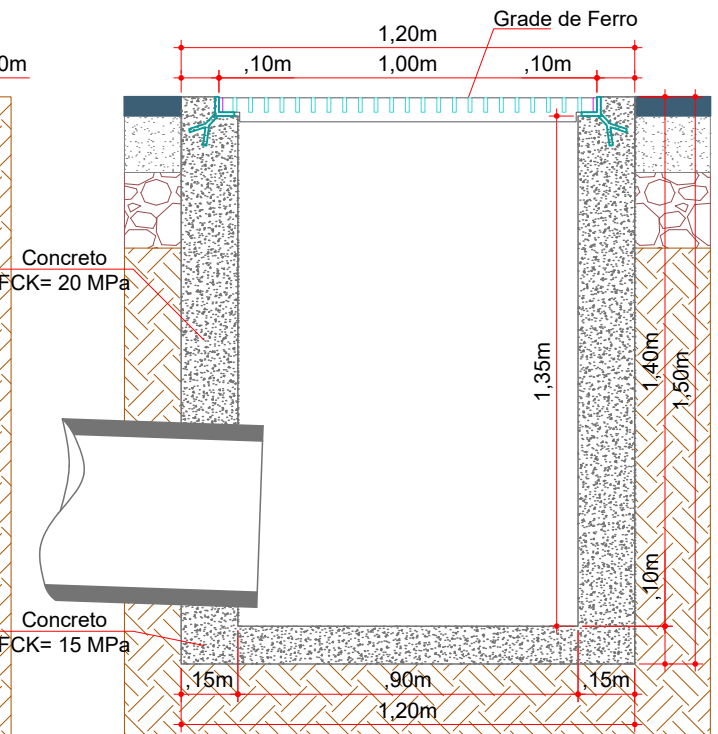


Planta Baixa  
Escala: 1/20

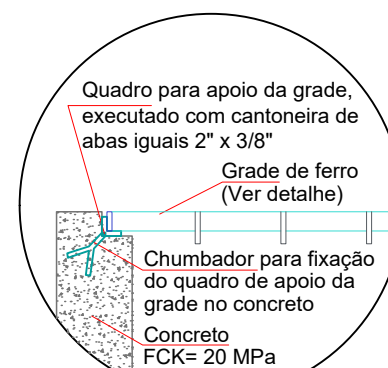
#### BOCA DE LOBO - TIPO I - Ø300mm/Ø400mm



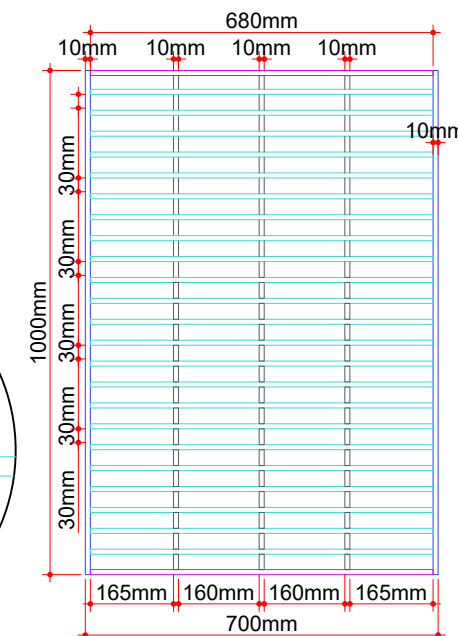
Corte AA  
Escala: 1/20



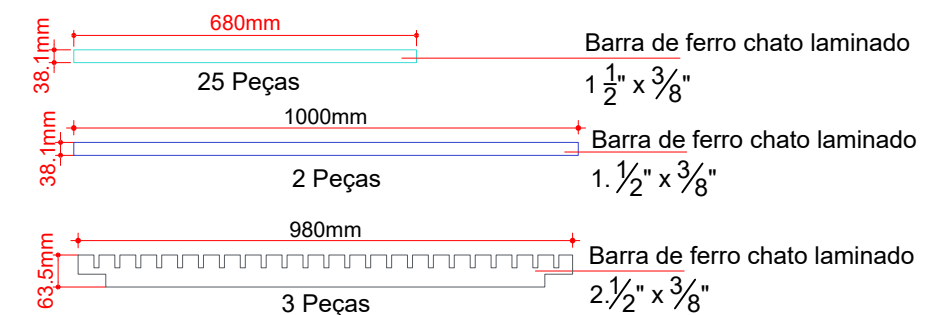
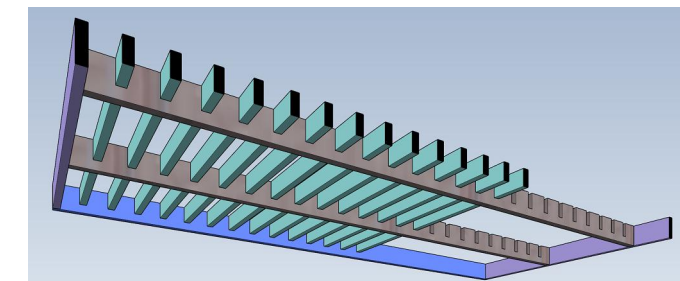
Corte BB  
Escala: 1/20



Detalhe Apoio da Grade  
Escala: 1/15



Detalhe da Grade  
Escala: 1/15



Projeto: Pavimentação em asfalto C.A.U.Q. das Ruas Darci Brandão e Sebastião Nodari - Herval d'Oeste/SC

Responsável Técnico:  
Ana Júlia U. de Carvalho - Eng. Civil - CREA-SC 105.295-8  
Andre Brito Dotti - Eng. Civil - CREA-SC 162.237-5  
Denir Narcizo Zulian - Eng. Civil - CREA-SC 50.805-8  
Fábio Zilio Caron - Eng. Civil - CREA-SC 140.642-7  
Lucas F. Balestrin - Eng. Agrônomo - CREA-SC 156.743-7  
Max Mooshammer - Eng. Civil - CREA-SC 139.164-0  
Suellen Karine Cervelin - Eng. Civil - CREA-SC 166.933-0

Drenagem

DRE.  
02/02

Assinatura Prefeito(a) Municipal Assinatura Responsável Técnico

Desenho: Felipe Lorenci Parisoto Data: outubro de 2021 Revisão: junho de 2022

Escala: Indicada (s) Trecho: 0+0,000 - 4+18,209